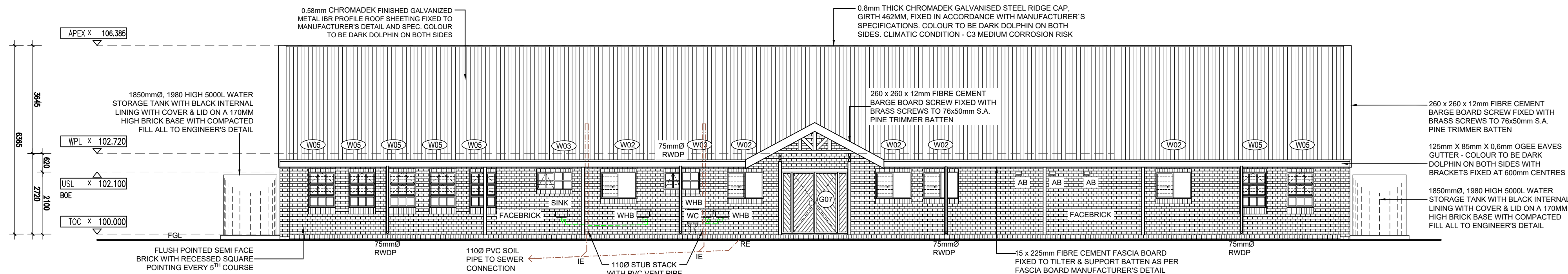
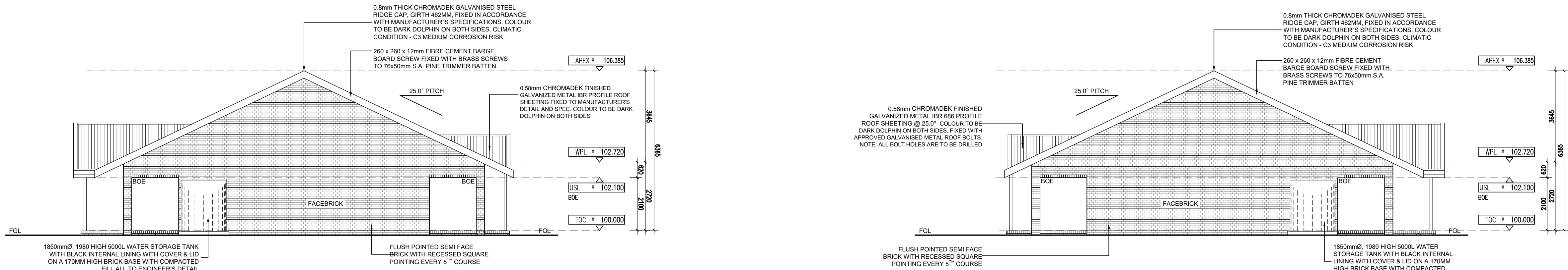


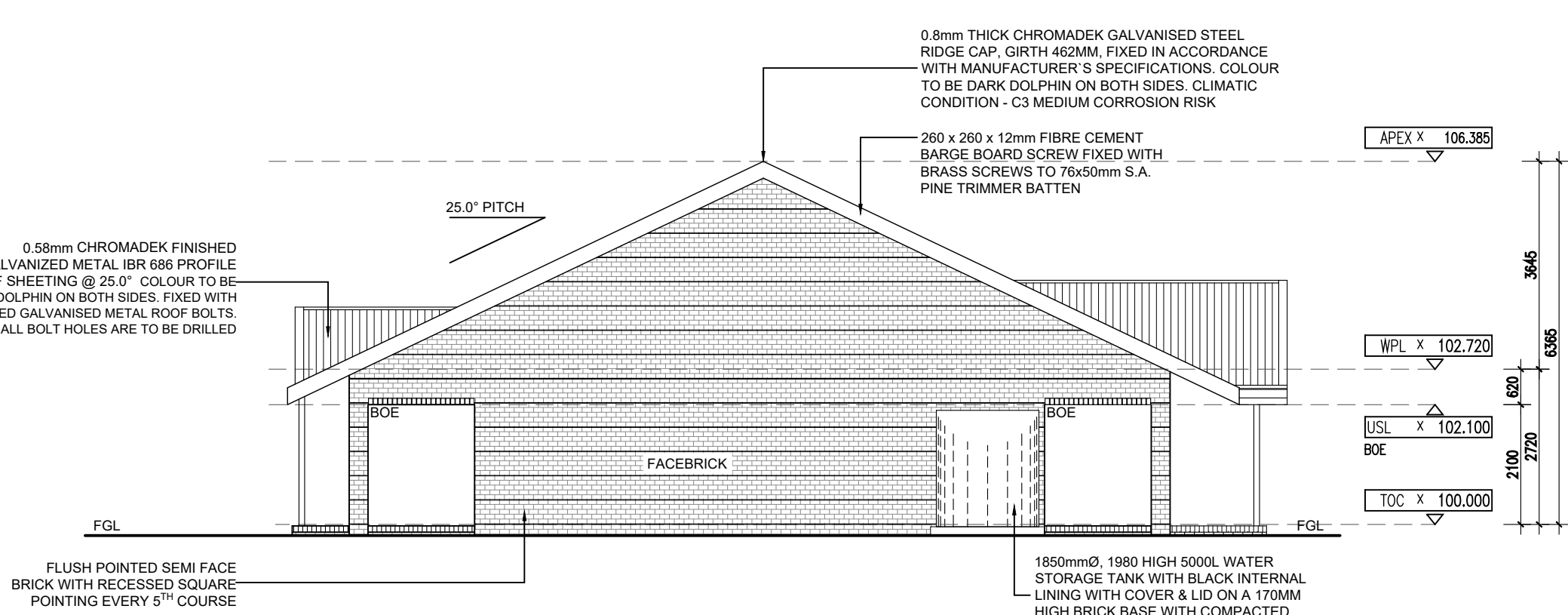
NORTH - EAST ELEVATION - 01  
SCALE 1:100



SOUTH - WEST ELEVATION - 02  
SCALE 1:100



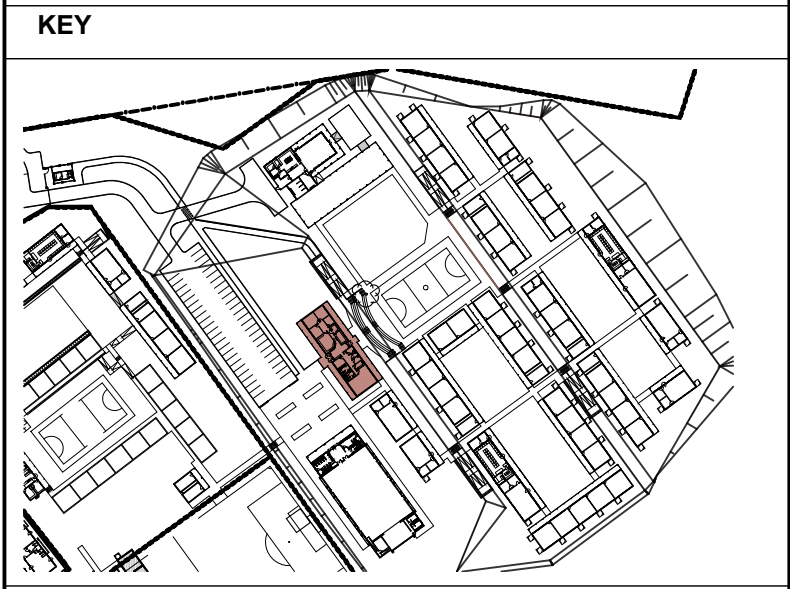
NORTH - WEST ELEVATION - 03  
SCALE 1:100



SOUTH - EAST ELEVATION - 04  
SCALE 1:100

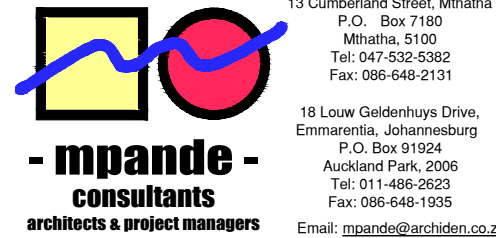
NO.	DATE	REVISION	DRAWN
A	2017-02-02	ISSUED FOR MEASURE	SG
B	2017-02-16	ISSUED FOR INFORMATION	SG
C	2017-06-22	1. COLUMN ADDED ON NORTH-EAST VERANDAH 2. FOUNDATION CHANGED FROM RAFT TO STRIP FOUNDATION 3. ROOF PLAN ADDED w02-01203 4. ROLLER SHUTTER ADDED TO RECEPTION 5. ISSUED FOR INFORMATION	SG
D	2017-07-27	1. TOP OF CONCRETE LEVEL CHANGED 2. ELEVATION NAMES UPDATED 3. ISSUED FOR MEASURE	SG
E	2017-08-10	1. TOP OF CONCRETE LEVEL REVISED. 2. ISSUED FOR MEASURE	SG
F	2017-12-07	1. FIRE WALL SHOWN ON ELEVATION. 2. TOP OF CONCRETE REVISED. 3. ISSUED FOR INFORMATION.	SG
G	2018-03-19	1. TOP OF CONCRETE LEVEL REVISED. 2. ISSUED FOR MEASURE	SG
H	2021-03-01	ISSUED FOR INFORMATION 1. ADDED PASTORAL ROOM, REDUCED AREA IN STAFF ROOM AND RECEPTION 2. ROOF CHANGED TO GABLE END 3. CHANGED ROOF PITCH TO 25° 4. CHANGED 330 x 330mm VERANDAH COLUMNS TO 90 x 100mm STEEL POSTS	DW MM
J	2023-07-08 2022-04-13 2021-09-07	ISSUED FOR MEASURE ISSUED FOR INFORMATION (EPMS) 1. WINDOW OPENING SECTIONS REVISED 2. DWG NO. CHANGED FROM 1817 TO 2204	DW
AA	2022-08-18	ISSUED FOR MEASURE - SEE REV J 1. LEVELS INDICATED USING 100.000 AS T.O.C.	DW

ISSUED FOR  
APPROVAL



PSP

ARCHITECT



ARCHITECTURAL PROFESSIONAL SACAP NUMBERS:

H.L. MANTEL SACAP 3045

IMPLEMENTED BY

INDEPENDENT  
DEVELOPMENT  
TRUST

SIGNATURE	DATE	SHEET NO.
DESIGNED		A1
DRAWN	SG	1:100
VERIFIED	-	STATUS LISTING
VALIDATED	-	I = INFORMATION FA = FOR APPROVAL T = TENDER C = CONSTRUCTION AB = AS BUILT

CLIENT



PROJECT  
DOE PORTFOLIO PROGRAMME  
ESTABLISHMENT OF NEW SCHOOLS  
HILLBROW - SENIOR SECONDARY SCHOOL  
PROVINCE: EASTERN CAPE PROVINCE

DRAWING TITLE  
ADMINISTRATION (LARGE)  
ELEVATIONS  
(BLOCK S-A)

DRAWING DESCRIPTION  
ADM1-W

EMIS NUMBER	DISCIPLINE	DRAWING NUMBER	STATUS	REVISION
200500293	ARCH	2204 w02-01/201	FA	AA